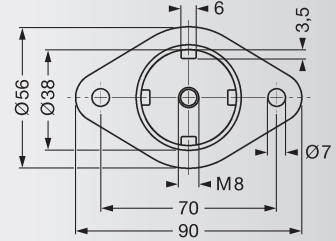
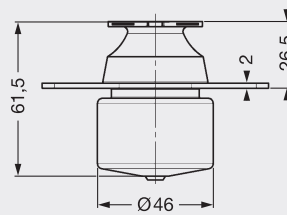
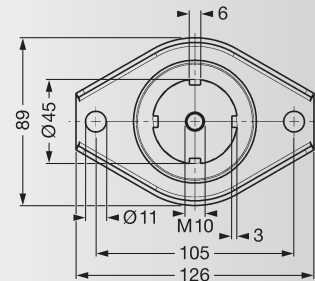
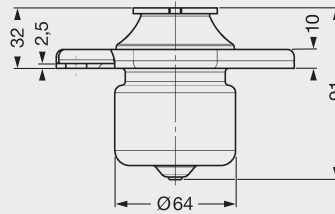


SCHWINGMETALL® Hydrolager



Hydrolager V 250



Hydrolager V 600

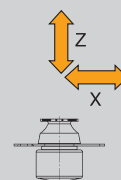
Hydrolager Serie V

Federsteifigkeiten				max. Belastungen			Ausreißkraft [kN]	Masse Stück [kg]	Elastomer Härte [Shore A]	Hydro- lager	Form-Nr.	Artikel-Nr.
C _x [N/mm]	C _y [N/mm]	C _z [N/mm]	C _{dyn} [N/mm]	F _x [N]	F _y [N]	F _z [N]						
15	15	49	250	77	77	300	> 3	0,200	40	V 250	102216	3978814001
45	45	159	520	194	194	750	> 9	0,593	45	V 600	100787	3978810001
58	58	228	770	458	458	1500	>15	0,775	55	V 1500	54439	3978813001
74	74	290	1080	530	530	1750	>15	0,775	60	V 1500	54439	3978812010
115	115	450	1730	750	750	2450	>15	0,775	70	V 1500	54439	3978811001
108	108	568	1520	1035	1035	3500	>30	1,100	55	V 3200	210182	3978815001

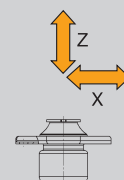
- ▶ **Maximal zulässige Schräglage zur Belastungsrichtung 15°**
- ▶ **Der Befestigungsflansch muss außerhalb des Topfes vollflächig unterstützt werden.**

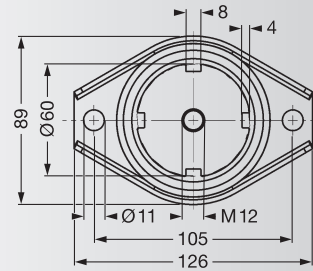
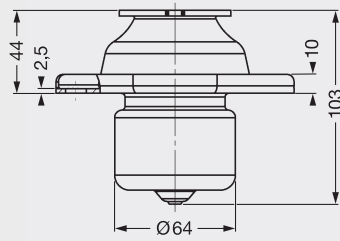
Kennlinien Hydrolager Serie V
siehe Seite 72–73 ▶

Belastungsrichtungen

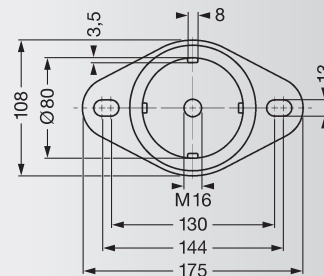
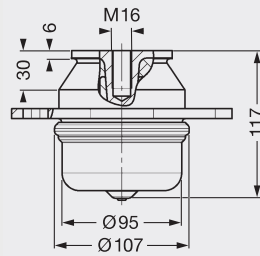
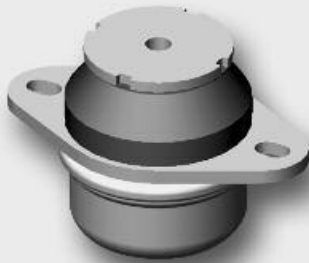


Belastungsrichtungen



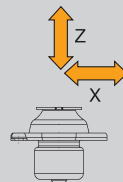


Hydrolager V 1500

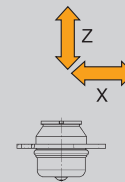


Hydrolager V 3200

Belastungsrichtungen

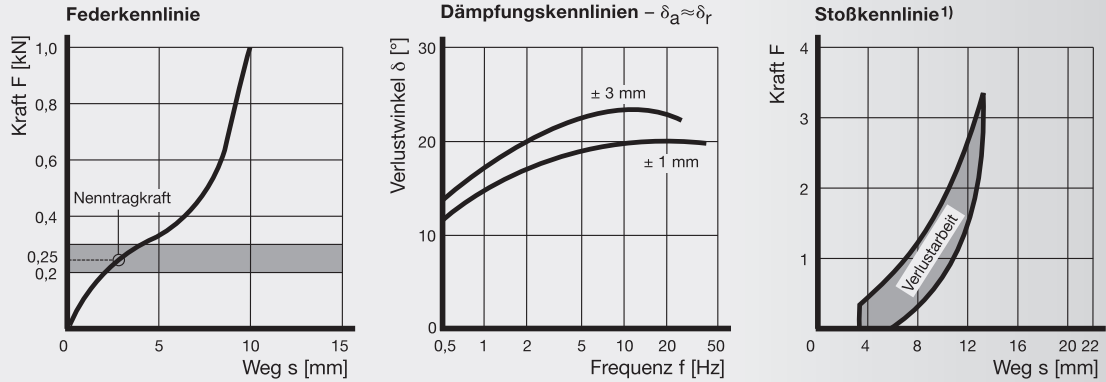


Belastungsrichtungen

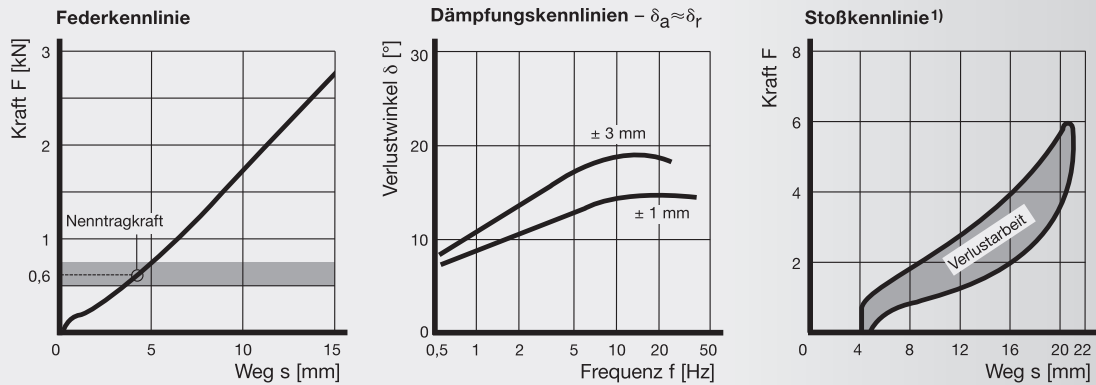


SCHWINGMETALL® Hydrolager

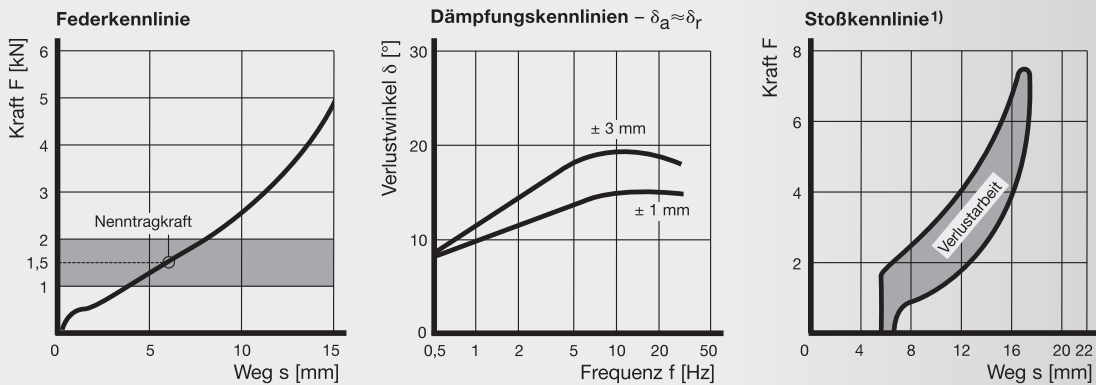
Kennlinien Hydrolager V 250 40 Shore A



Kennlinien Hydrolager V 600 45 Shore A

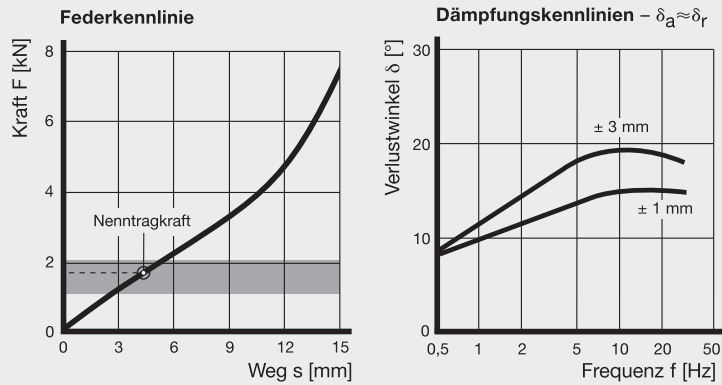


Kennlinien Hydrolager V 1500 55 Shore A

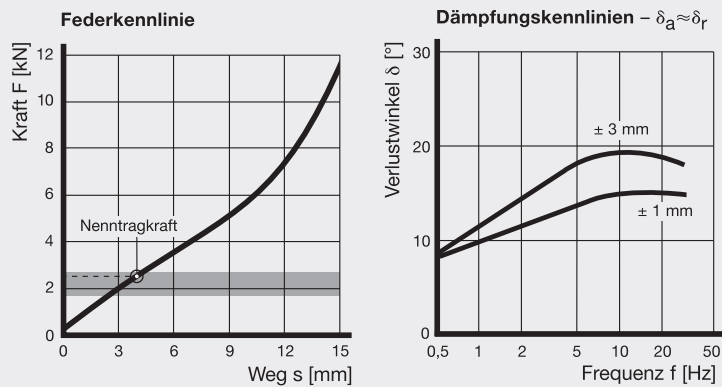


¹⁾ Stoß bei Nennlast.

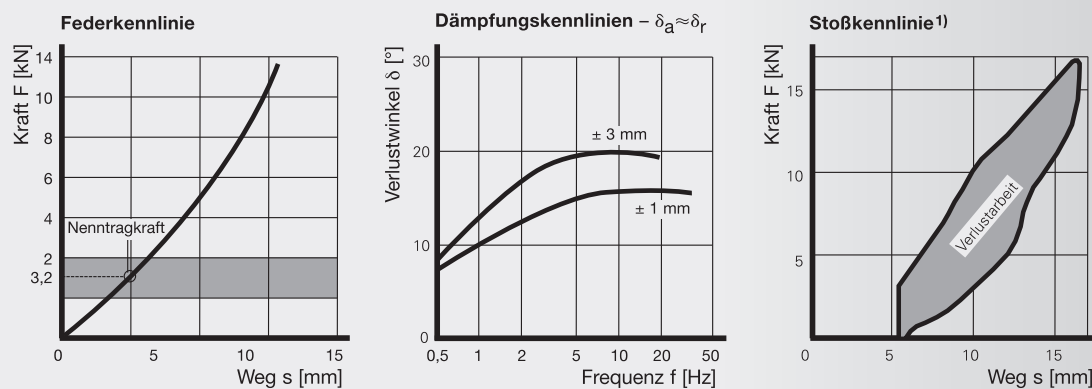
Kennlinien Hydrolager V 1500 60 Shore A



Kennlinien Hydrolager V 1500 70 Shore A



Kennlinien Hydrolager V 3200 55 Shore A



¹⁾ Stoß bei Nennlast.